



BEVIS PLACE

STARTING IN LOW \$400'S
3 BEDS | 3.5 BATHS | 1,840 BUILT SQFT



MARKETED BY

DEVELOPED BY

**CitiQuest**
PROPERTIES

GREYDEN
BUILDING GROUP

About Bevis Place

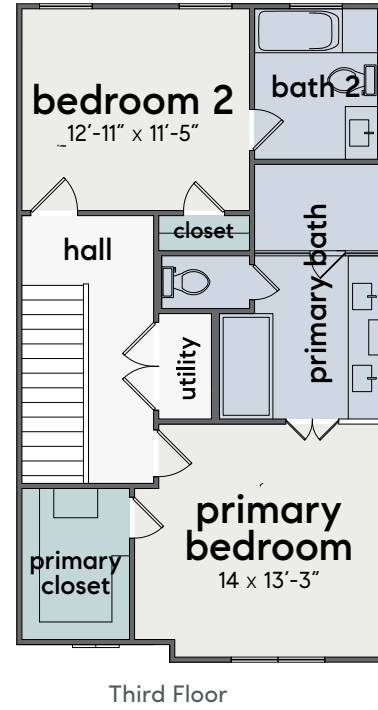
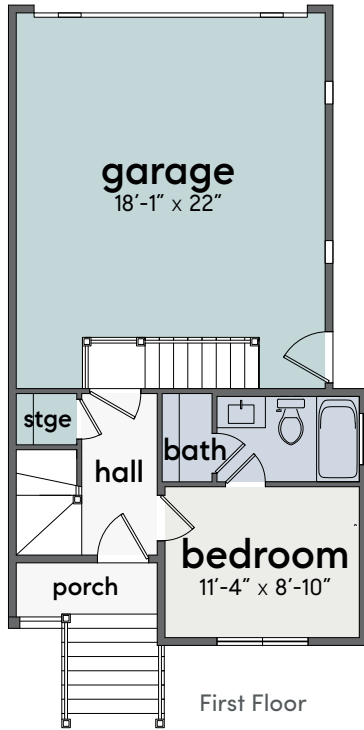
DESCRIPTION

Gorgeous traditional style homes in the highly-desired Shady Acres! This is a 10-home community built by Zoom Homes. It is conveniently located near 610 North, I-10, The Washington Corridor, Memorial Park and The Galleria. Also, it is just a few blocks away from the new HEB Heights on W23rd St and Shepherd Dr. This home features 10-ft ceilings, engineered hardwood floors, Shaker cabinets, and two balconies. Currently under construction with no model to walk, please schedule your appointment.

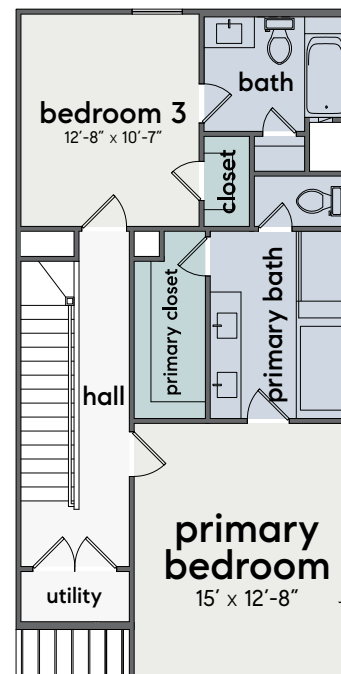
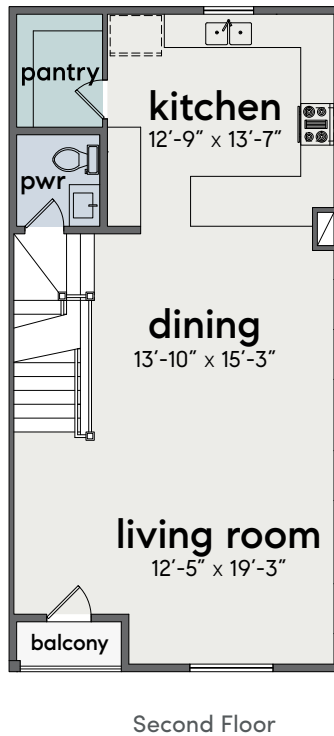
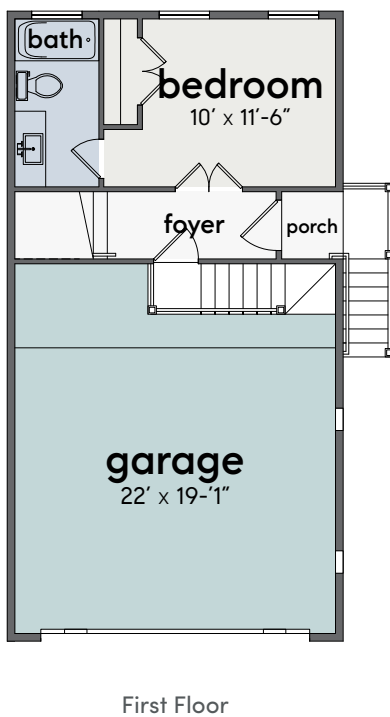


Floorplan

PLAN A



PLAN B



Siteplan & Availability



Address	Sqft	Beds	Baths	Pricing
1304 A	1,840	3	3.5	\$454,900
1304 B	1,840	3	3.5	\$444,900
1304 C	1,840	3	3.5	\$444,900



CitiQuest

 PROPERTIES

www.citiquestproperties.com

Jeremiah Gowen
 832.221.5283
jeremiah@cqhouston.com

Patrick Burbridge
 713.581.6000
patrick@cqhouston.com