



BERTELLIS COURT

STARTING AT MID \$300s
3 BEDROOMS | 2.5 BATHROOMS | 1,694 Sqft



MARKETED BY

**CitiQuest**
PROPERTIES

BUILT BY

Urbatechture

About Bertellis Court

DESCRIPTION

Welcome to Bertellis Court, an idyllic community designed for comfortable and contemporary living. Nestled amidst lush greenery, our subdivision offers a range of stylish and thoughtfully designed homes that will exceed your expectations. Our floor plans feature 3 spacious bedrooms and 2 1/2 baths, spread across two stories. The first floor has been carefully crafted to accommodate your daily activities, with an open living space that seamlessly combines the living room, dining area, and kitchen. The large windows flood the area with natural light, creating a warm and inviting atmosphere. Step outside onto the covered patio, where you can relax and entertain guests while enjoying the serene views of your backyard. Our homes come with upgraded finishes that exude elegance and quality. The kitchen boasts 42-inch cabinets that provide ample storage space for all your culinary needs. The stunning quartz countertops are both visually striking and highly durable, perfect for preparing meals or hosting gatherings. The ceramic tile in the bathrooms adds a touch of sophistication, while the bath tubs are surrounded by stylish and practical surrounds. Step inside, and you'll be greeted by vinyl, wood plank flooring that not only looks exquisite but is also easy to maintain. The high ceilings throughout the homes create an open and airy feel, adding to the overall sense of space and grandeur.

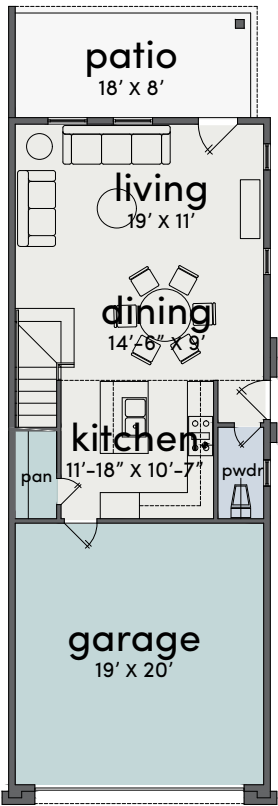
FEATURES

- Five MOVE-IN ready homes and 13 more on the way
- Two contemporary floor plans offering first floor living and a half bath on the lower level
- Privately fenced oversized backyards
- Subtle design elements such as electrical outlets that are incorporated into baseboards and underneath cabinets
- Soft close drawers and cabinets
- High ceilings and recessed lighting throughout
- Smart home and security features
- Minutes away from Whole Foods, Luce Coffee, and TC Jester Park
- Convenient access to I-45, 610, and 290

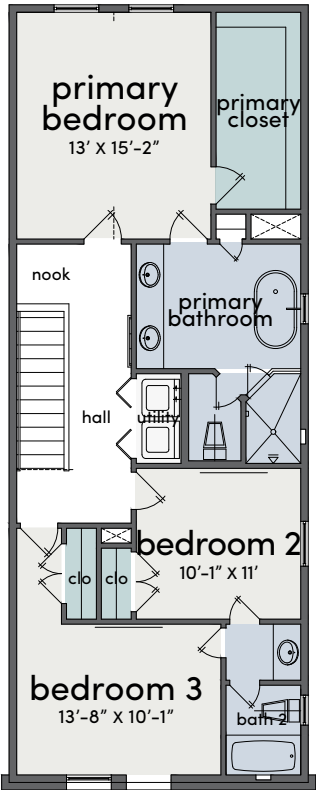


Floorplans

PLAN A



First Floor



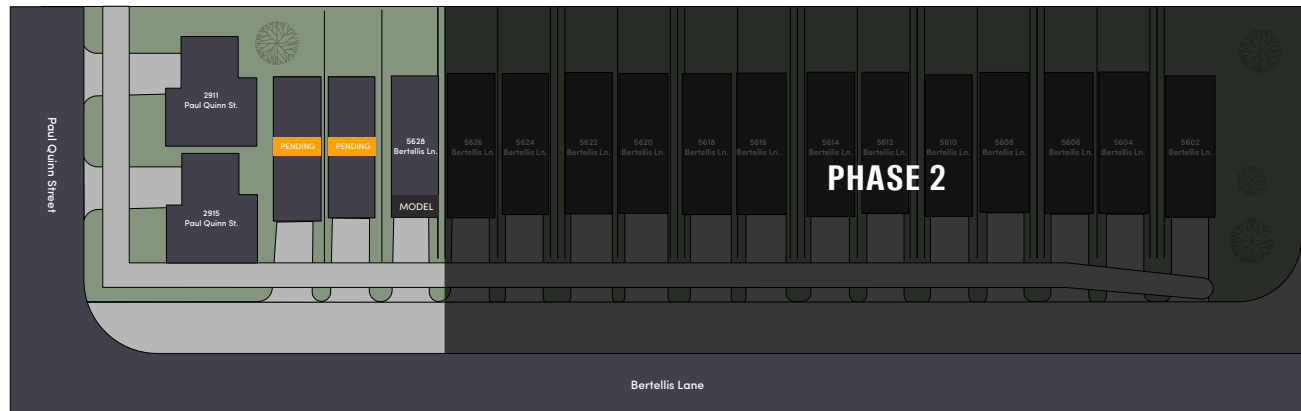
Second Floor

PLAN B



**Image displayed for inspirational purpose only.*

Siteplan & Availability



Address	Plan	Sqft	Beds	Baths	Price
5632 Bertellis Ln.	A	1,694	3	2.5	-
5630 Bertellis Ln.	A	1,694	3	2.5	-
5628 Bertellis Ln.	A	1,694	3	2.5	\$359,900



www.citiquestproperties.com

Britney Buckley

832.479.4796

britney@cqhouston.com

Patrick Burbridge

713.581.6000

sales@cqhouston.com