



# Wheatley

LANDING

ONLY ONE HOME LEFT!  
3 BEDROOMS | 2.5 BATHROOMS | 1,674 SQFT



MARKETED BY

**CitiQuest**  
PROPERTIES

DEVELOPED BY

  
ZOOM HOMES

# About Wheatley Landing

## DESCRIPTION

Welcome to Wheatley Landing! A beautiful sixteen home community by Zoom Homes. Phase 1 presents eight stunning, standalone 2-story homes with first-floor living. Each residence features an attached double car garage, elegant quartz countertops, and top-of-the-line stainless steel appliances. The primary bath, boasting double sink vanities, an expansive oversized shower, and a remarkably spacious walk-in closet. The open kitchen seamlessly integrates with the inviting living room, creating an enchanting space perfect for hosting and entertaining. Currently under construction, this remarkable community guarantees an elevated living experience.



## FEATURES

- 1st floor living
- Black fixtures
- Pantry
- Eat at island
- 2 Car Garage
- Separate Shower and tub
- All bedrooms up
- Yards
- Gated

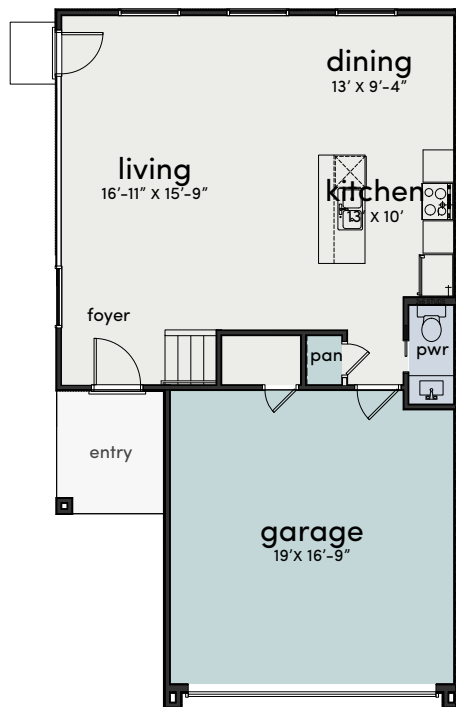


## UPGRADES:

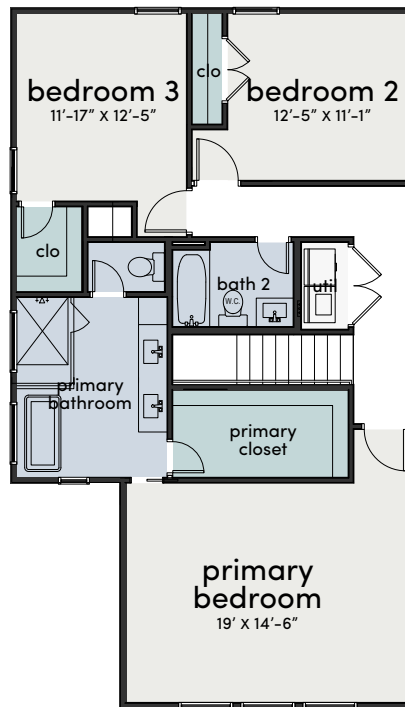
- Wifi Kwikset Electronic Keypad Smartkey Deadbolt
- Kwikset door hardware with Smartkey technology.
- Ring Video Doorbell
- LED Lighted Bathroom Mirrors with Anti-Fog, 10%-100% Dimmable
- Exterior Light Fixtures with Dusk to Dawn Sensor



# Floorplans



First Floor



Second Floor



# Siteplan & Availability



Address	Sqft	Beds	Baths	Pricing	Completion Day
6331 Wheatley St	1,674	3	2.5	\$319,900	June 7
6345 Wheatley St	1,674	3	2.5	\$319,900	June 30
6333 Wheatley St	1,674	3	2.5	\$314,900	June 7 -MODEL
6343 Wheatley St	1,674	3	2.5	\$314,900	June 7
6335 Wheatley St	1,674	3	2.5	\$314,900	June 30
6341 Wheatley St	1,674	3	2.5	\$314,900	June 30
6339 Wheatley St	1,674	3	2.5	\$317,900	June 30

MARKETED BY

  
**CitiQuest**  
 PROPERTIES

[www.citiquestproperties.com](http://www.citiquestproperties.com)

**Javier Gallardo**

832.643.2490

[javier@cqhouston.com](mailto:javier@cqhouston.com)

**Patrick Burbridge**

713.581.6000

[sales@cqhouston.com](mailto:sales@cqhouston.com)