



Wheatley

LANDING

STARTING IN THE LOW \$300's
3 BEDROOMS | 2.5 BATHROOMS | 1,674 SQFT



MARKETED BY

CitiQuest
PROPERTIES

DEVELOPED BY

ZOOM HOMES

About Wheatley Landing

DESCRIPTION

Welcome to Wheatley Landing! A beautiful sixteen home community by Zoom Homes. Phase 1 presents eight stunning, standalone 2-story homes with first-floor living. Each residence features an attached double car garage, elegant quartz countertops, and top-of-the-line stainless steel appliances. The primary bath, boasting double sink vanities, an expansive oversized shower, and a remarkably spacious walk-in closet. The open kitchen seamlessly integrates with the inviting living room, creating an enchanting space perfect for hosting and entertaining. Currently under construction, this remarkable community guarantees an elevated living experience.



FEATURES

- 1st floor living
- Black fixtures
- Pantry
- Eat at island
- 2 Car Garage
- Separate Shower and tub
- All bedrooms up
- Yards
- Gated

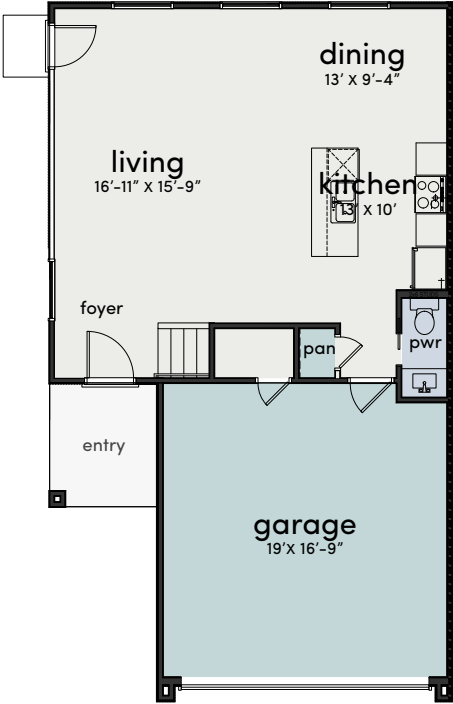


UPGRADES:

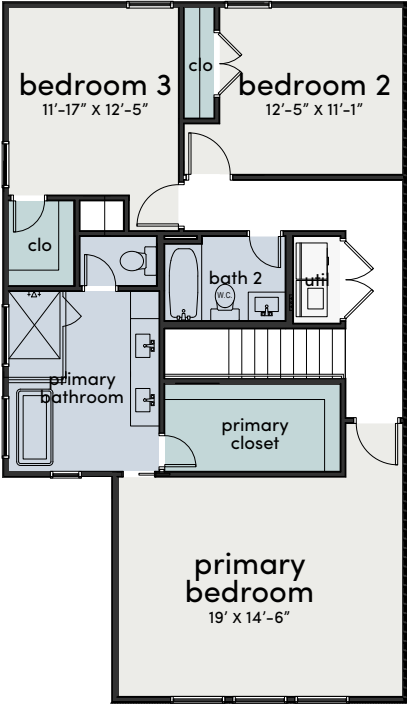
- Wifi Kwikset Electronic Keypad Smartkey Deadbolt
- Kwikset door hardware with Smartkey technology.
- Ring Video Doorbell
- LED Lighted Bathroom Mirrors with Anti-Fog, 10%-100% Dimmable
- Exterior Light Fixtures with Dusk to Dawn Sensor



Floorplans



First Floor



Second Floor



Siteplan & Availability



Address	Sqft	Beds	Baths	Pricing
6331 Wheatley St	1,674	3	2.5	\$314,900
6343 Wheatley St	1,674	3	2.5	\$312,900
6345 Wheatley St	1,674	3	2.5	\$314,900

MARKETED BY



Javier Gallardo
832.643.2490
javier@cqhouston.com

Patrick Burbridge
713.581.6000
sales@cqhouston.com