


GREYDEN
ESTATES

STARTING IN THE LOW \$400's
4-5 BEDROOMS | 3-3.5 BATHROOMS | 2,708 - 3,071 SQFT



MARKETED BY


CitiQuest
PROPERTIES

DEVELOPED BY


MARBELLA
HOMES

About Greyden Estates

DESCRIPTION

Introducing Greyden Estates | A community of one & two level contemporary residences. Multiple floor plan options designed for the modern lifestyle, with living areas on the main level, 11' ceilings, balconies, sizable private yard spaces. Level I is complete w/ wide-plank luxury vinyl flooring, dine-in kitchen garnished w/ SS appliances, select plumbing fixtures, modern quartz countertops & euro style cabinetry. For homes with two levels, they feature the Owners Primary Suite, two guest suites, & a vast game room. The expansive window lined primary bedroom is complete with luxury vinyl flooring, a stunning bath complete with dual vanities, freestanding soaking tub, glass enclosed shower & a massive dual walk-in closets with built-ins. Substantial secondary bedrooms are both en-suite with walk-in closets & tub/shower combos. Located in the Sienna Plantation area of Missouri City, there's plenty of dining, shopping, and entertainment amenities nearby! From the brand new LifeTime Fitness Resort right around the corner, to shopping and dining at Fort Bend's Town Center. Discover a new standard of luxurious living at Greyden Estates, where every detail has been thoughtfully crafted to enhance your modern lifestyle.

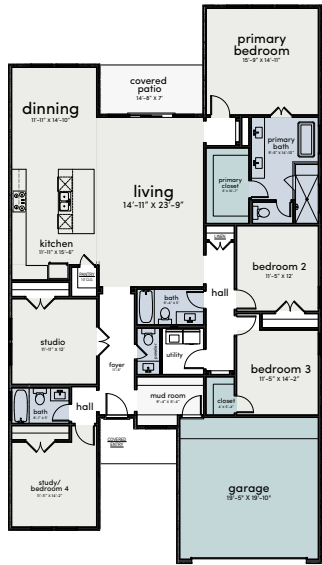
FEATURES

- Gated Community
- Double Wide Streets
- Massive Private Backyards
- Modern Luxury Finishes/Selections
- High Ceilings
- Unique and Spacious Floor Plans
- Euro-style cabinetry
- Modern quartz countertops
- Glass enclosed shower
- Dual Vanities (primary bedroom)
- Four open floor plans
- Freestanding soaking tub (primary bedroom)
- Covered patio

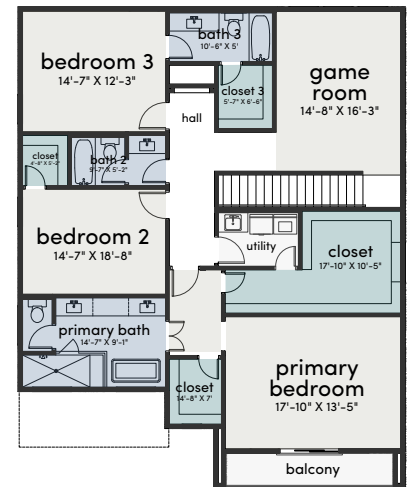
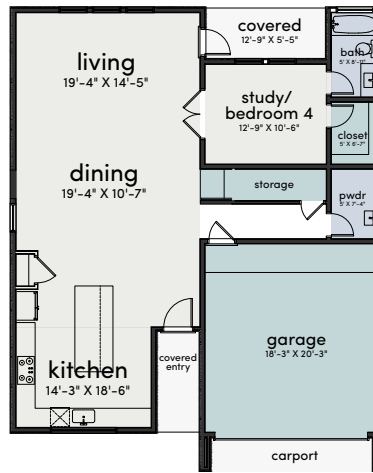


Floorplans

PLAN A
4 Beds | 3 Baths | 2,708 sqft



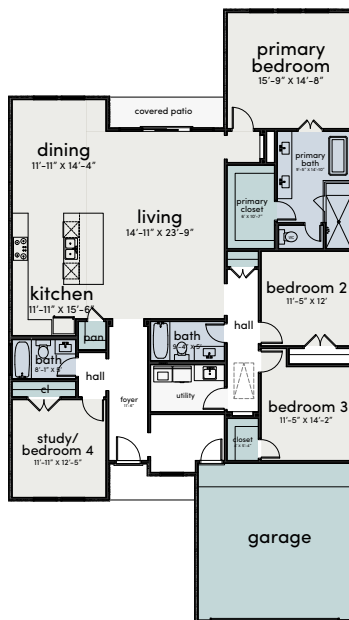
PLAN B
4 Beds | 3.5 Baths | 2,821 sqft



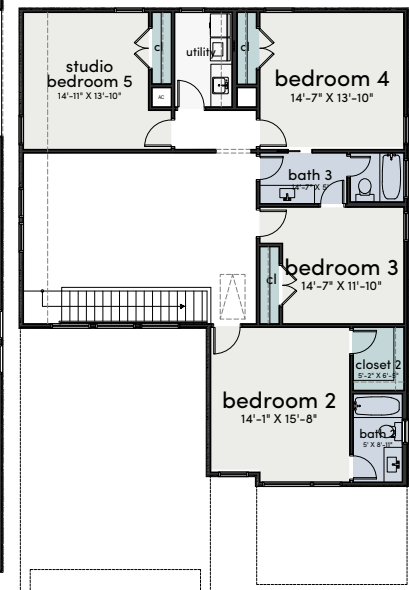
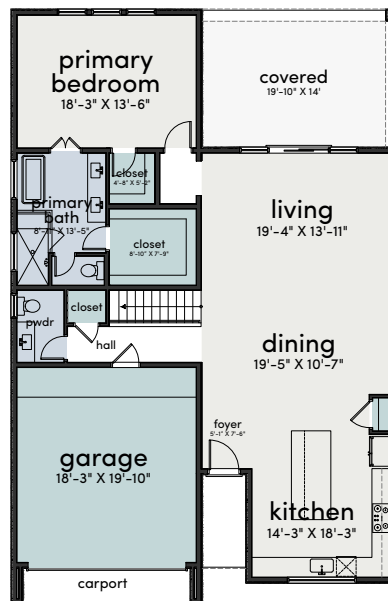
First Floor

Second Floor

PLAN C
4 Beds | 3 Baths | 2,952 sqft



PLAN D
5 Beds | 3.5 Baths | 3,071 sqft



First Floor

Second Floor

Siteplan & Availability



**CitiQuest**
PROPERTIES

www.citiquestproperties.com

Brian Shemirani
281.617.6664
brian@cqhouston.com

Patrick Burbridge
713.581.6000
sales@cqhouston.com

All material presented herein is intended for informational purposes only. Information is compiled from sources deemed reliable but is subject to errors, omissions, changes in price, condition, sale, or withdrawal without notice. All measurements and square footages are approximate, but not guaranteed and should be independently verified. This is not intended to solicit property already listed. Nothing herein shall be construed as legal, accounting or other professional advice outside the realm of real estate brokerage. Equal Housing Opportunity.

Revisions: 01/05/2024