

ET
EASTSIDE
TERRACE



Eastside Terrace

3 BEDS | 3.5 BATHS | 1,628 SQFT
STARTING IN HIGH \$300's

FEATURES

- Located in the historic Near Northside neighborhood and minutes from downtown
- 6 freestanding homes
- 3-story floor plan
- 1,628sqft
- Second floor living area
- 3 bedroom - 3.5 bathrooms
- Flex room on the second floor
- 2-car garage
- Smart-home and security features
- Energy efficient features
- Upgraded finishes throughout

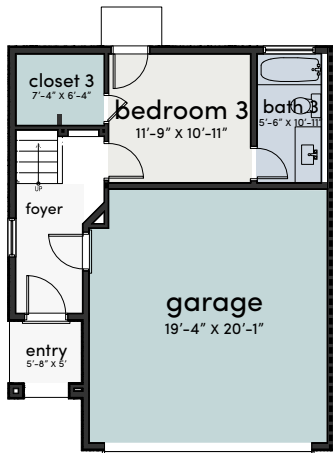


Yenny Labrador
REALTOR®
281.928.1058
yenny@cqhouston.com

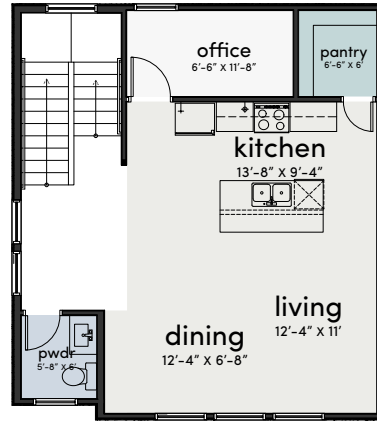


SCAN FOR COMPLETE
SPEC & FEATURES

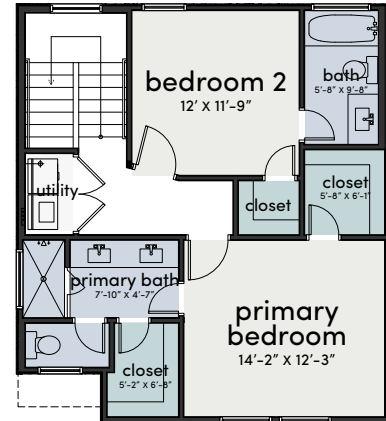
Floor Plans & Availability



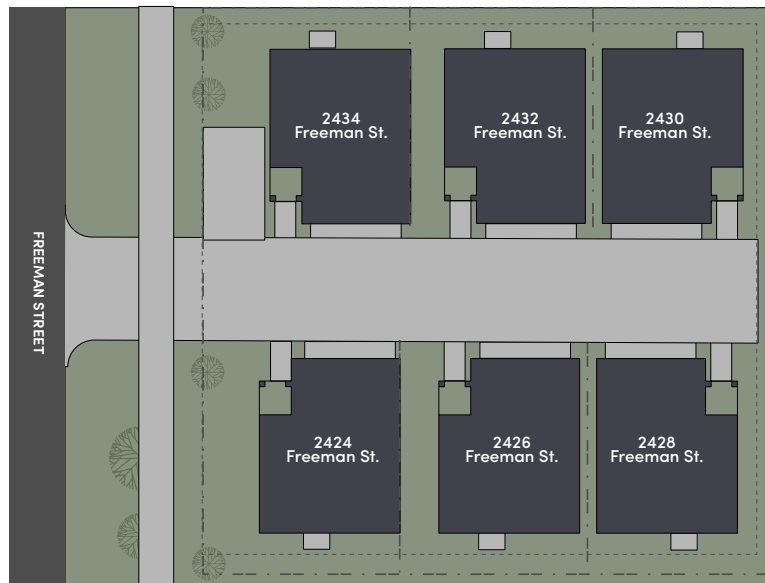
FIRST FLOOR



SECOND FLOOR



THIRD FLOOR



MARKETED BY

CitiQuest
PROPERTIES