

Marina Farmhouses

Starting in High \$300s

3 Beds | 2.5 Baths | 1,777 SQFT



COMPASS

MARKETED BY


CitiQuest
PROPERTIES GROUP

About Marina Farmhouses

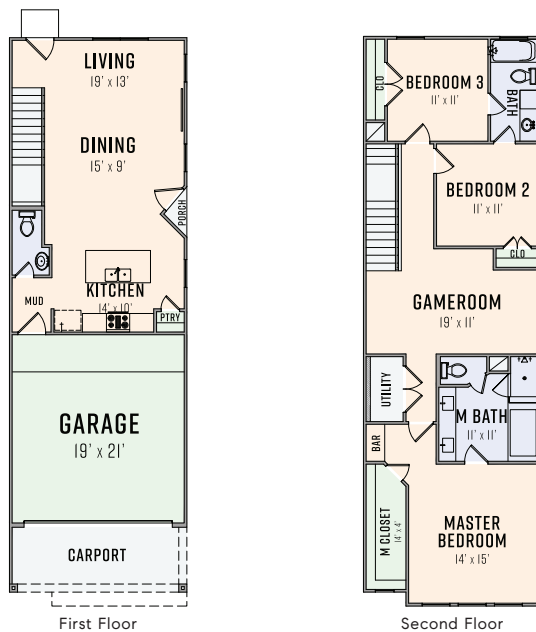
DESCRIPTION

Beautiful new construction home in the Rice Military/ Washington Corridor area! Home features first floor living area & kitchen, a private driveway, back yard & NO HOA!! Wood flooring, stainless steel appliances with custom home features. Open floor plan and elegant island kitchen. Huge owners retreat with spacious walk-in closets, double sinks, elegant soaking tub & large walk in shower with frameless glass. Minutes from downtown, Galleria and Memorial Park! Easy access to I-10 & 610.

FEATURES

- New construction
- First floor living
- Private driveway
- Backyards
- No HOA
- Stainless steel appliances
- Huge owners retreat
- Open floor plan

FLOOR PLAN



**CitiQuest**
PROPERTIES GROUP
www.citiquestproperties.com

Andrea Zachrisson
832.954.6694
andrea@cqhouston.com

Patrick Burbridge
713.581.6000
patrick@cqhouston.com