



TERRY
FARMHOUSES

STARTING IN THE HIGH \$300's
3 BEDROOMS | 2.5 BATHROOMS | 1,590 - 1,695 SQFT



MARKETED BY



CitiQuest
PROPERTIES

DEVELOPED BY



NJA Homes

About Terry Farmhouses

DESCRIPTION

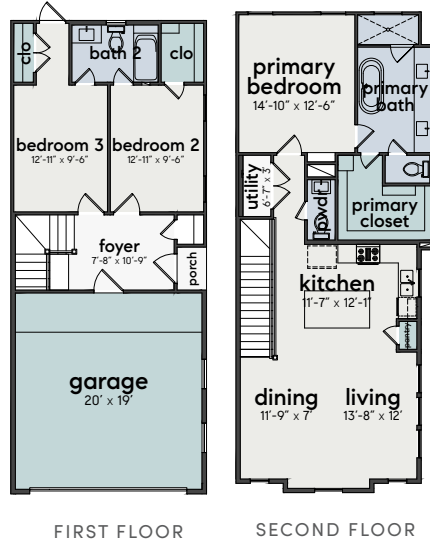
Presenting a stunning collection of contemporary farmhouses in the heart of Near Northside, NJA Homes pays tribute to artistry, innovation, and refinement in 'The Terry Farmhouses.' Each front facade harmoniously blends modern design and traditional elements. Inside the home, guests are welcomed by wood-like stained oak LVP flooring that extends throughout the home, foregoing any carpet. The three remaining homes feature two spacious bedrooms on the first floor, with the living quarters and primary bedroom atop the second story. The large primary provides a remarkable ensuite bathroom featuring abundant countertop space, double sinks, a soaking tub, and a noteworthy glass-enclosed shower. The chef's kitchen offers an uninterrupted island with ample storage space, expansive dual-toned shaker cabinetry, and brass and gold hardware, complementing the extensive white quartz countertops. The two spacious secondary bedrooms offer access to your private yard and share a well-designed "jack & jill" style bathroom featuring sleek finishes and herringbone patterned tile. The Terry Farmhouses are found near the intersection of Quitman and Terry St., allowing them to provide a 5-minute drive to Highways 59, I-10, and I-45. And just a 7-minute drive to highway I-610.

FEATURES

- Large, double-wide private driveways
- Private sizable yards on every home
- Vaulted 18ft ceilings in living room areas
- Uninterrupted calacatta quartz island countertops with extra storage
- Oversized door openings throughout each home
- Cortland-stained LVP flooring throughout each home, forgoing any carpet



Floorplans



NEARBY ATTRACTIONS MAP

FOOD

1. Fiesta en Guadalajara
2. Poppa Burger
3. El Taconazo
4. Asia Market Thai Lao
5. La Fisheria
6. Good Dog Houston
7. Potente
8. Tiny Champions

BARS

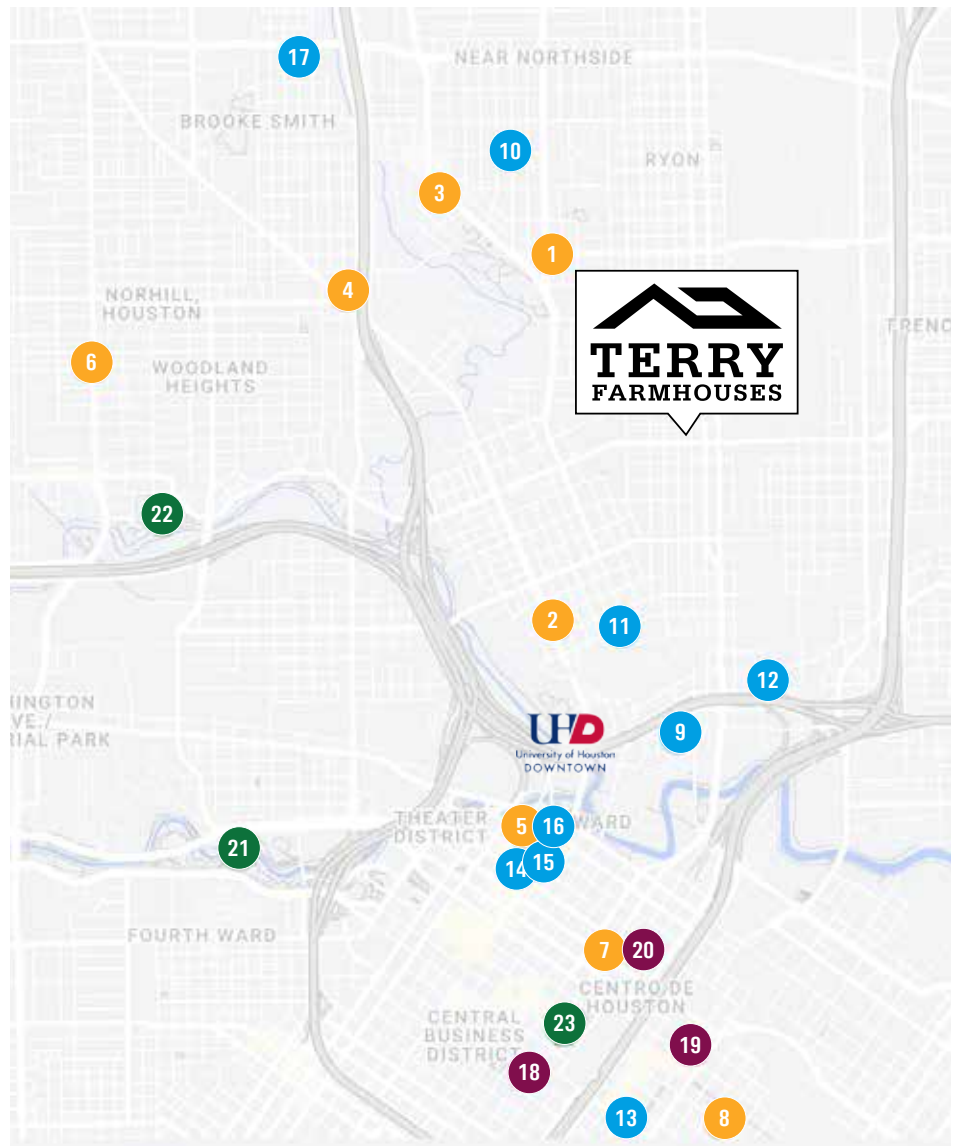
9. Last Concert Cafe
10. Trash Panda
11. Bad Astronaut Brewing Company
12. Saint Arnold Brewing Company
13. 8th Wonder Brewing Company
14. Dean's
15. El Big Bad
16. Houston Watch Company
17. D&T Drive Inn

ENTERTAINMENT

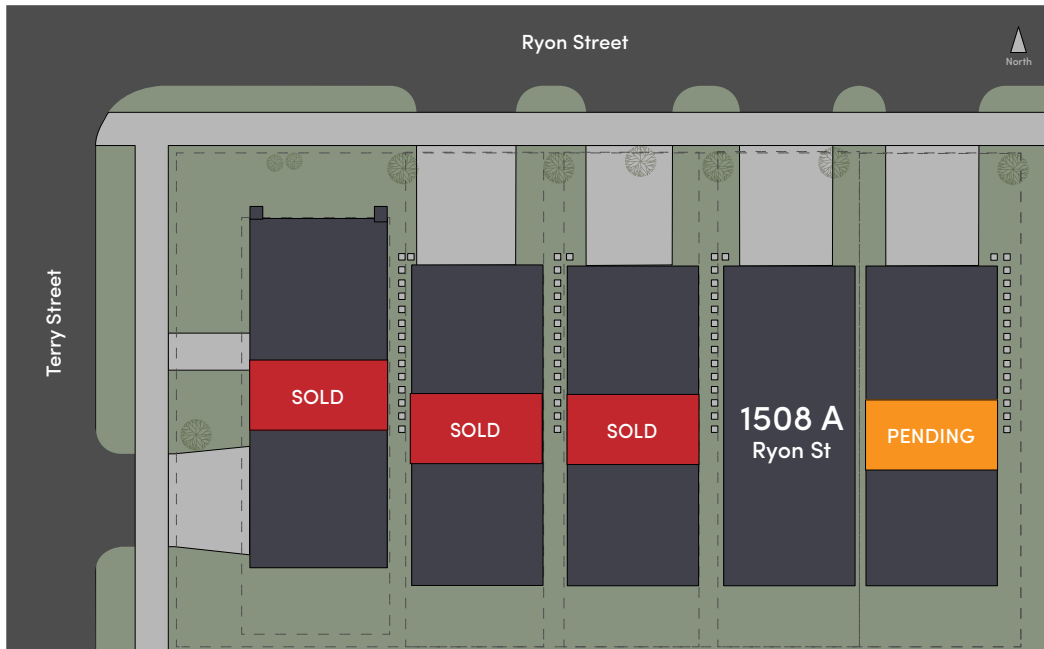
18. Toyota Center
19. Shell Energy Stadium
20. Minute Maid Park

PARKS

21. Eleanor Tinsley Park
22. Stude Park
23. Discovery Green



Siteplan & Availability



Address	Plan	Sqft	Beds	Baths	Pricing
1508 A Ryon Street	A	1,590	3	2.5	\$364,999
1508 B Ryon Street	A	1,590	3	2.5	-

MARKETED BY



Kleber Pita

713.412.8820

kleber@cqhouston.com

Patrick Burbridge

713.581.6000

sales@cqhouston.com