



**CHESTNUT**  
MODERN

STARTING IN LOW \$400's  
3 BEDROOMS | 3.5 BATHROOMS | 1,729 SQFT



MARKETED BY

DEVELOPED BY



**CitiQuest**  
PROPERTIES



**NJA Homes**

# About Chestnut Modern

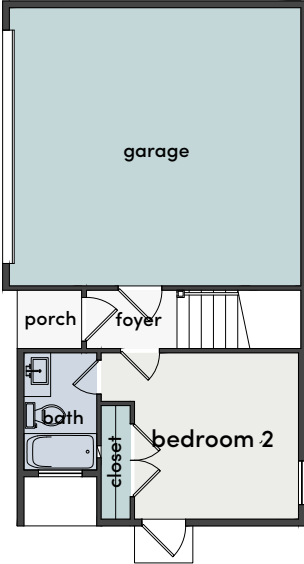
## DESCRIPTION

Welcome to Chestnut Modern, an exquisite development that epitomizes modern living. This meticulously planned enclave boasts six captivating 3-story patio homes, each designed in a modern farmhouse style. Key Features include a prime Location near Downtown Houston. Thoughtful Design: These home provide a seamless blend of style and functionality. Open Floor Plans: The heart of these homes is the modern kitchen, seamlessly integrated into an open floor plan. This design creates a dynamic space that is perfect for entertaining guests, allowing you to host gatherings with ease. Quality Craftsmanship from the carefully selected materials to the attention to detail in every corner. Each home boasts a generous 1729 square feet of meticulously designed living space. This provides ample room for comfortable living, allowing you to tailor the space to your lifestyle. Welcome home.

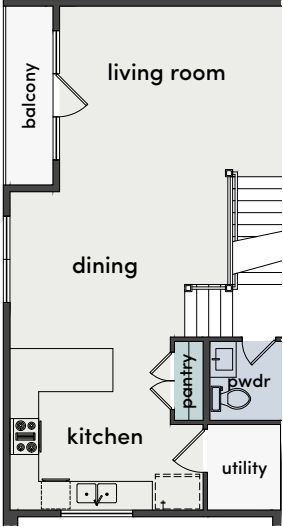


# Floorplans

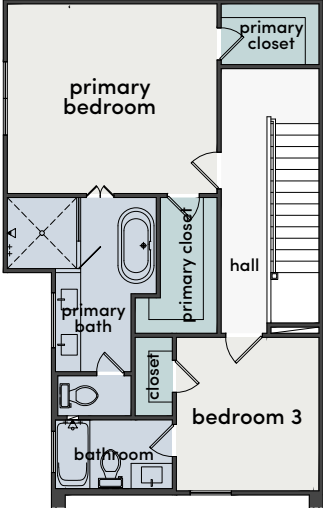
PLAN B  
3 BD | 3.5 BA | 1,729 SQFT



First Floor



Second Floor



Third Floor

# Siteplan & Availability



Address	Plan	Sqft	Beds	Baths	Pricing
1503 A Chestnut St	B	1,729	3	3.5	\$424,900

MARKETED BY



**Kory Hinton**  
 832-588-1476  
 kory@cqhouston.com

**Patrick Burbridge**  
 713.581.6000  
 sales@cqhouston.com

All material presented herein is intended for informational purposes only. Information is compiled from sources deemed reliable but is subject to errors, omissions, changes in price, condition, sale, or withdrawal without notice. All measurements and square footages are approximate, but not guaranteed and should be independently verified. This is not intended to solicit property already listed. Nothing herein shall be construed as legal, accounting or other professional advice outside the realm of real estate brokerage. Equal Housing Opportunity.