



MODERN DUO
AT BURKETT

STARTING IN THE MID \$400's
3 BEDROOMS | 3.5 BATHROOMS | 2,020 SQFT



MARKETED BY



DEVELOPED BY



About Modern Duo at Burkett

DESCRIPTION

Elevate your Lifestyle with Niche Homes' newest development: Modern Duet at Burkett. Where you will discover an epic 3-bedroom home featuring a bright open flow layout, a primary suite with dual closets and a stylish en suite bathroom, a stunning kitchen with a large island, apron sink, and quartz countertops, a spacious game room on the second level, and luxury plank flooring throughout. Custom accents and details that you will not find anywhere else! The symmetrical backyard adds charm, and with convenient access to 288, I-69 and I-45, commuting is a breeze. Enjoy proximity to the Texas Medical Center, Museum District, Midtown, and East Downtown. NO HOA!

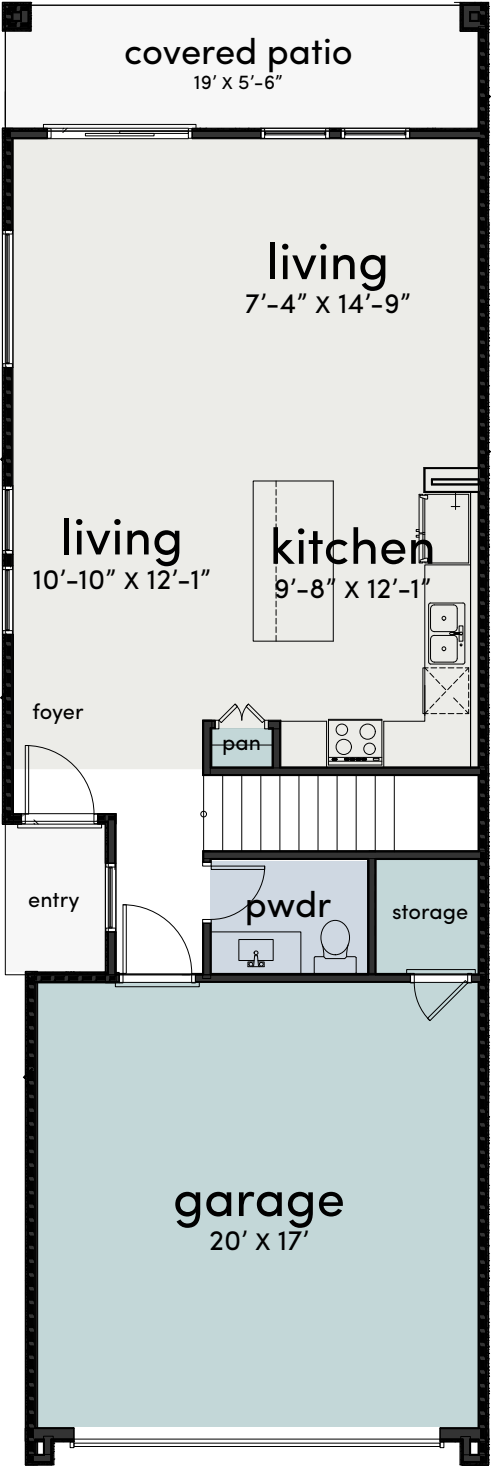


FEATURES

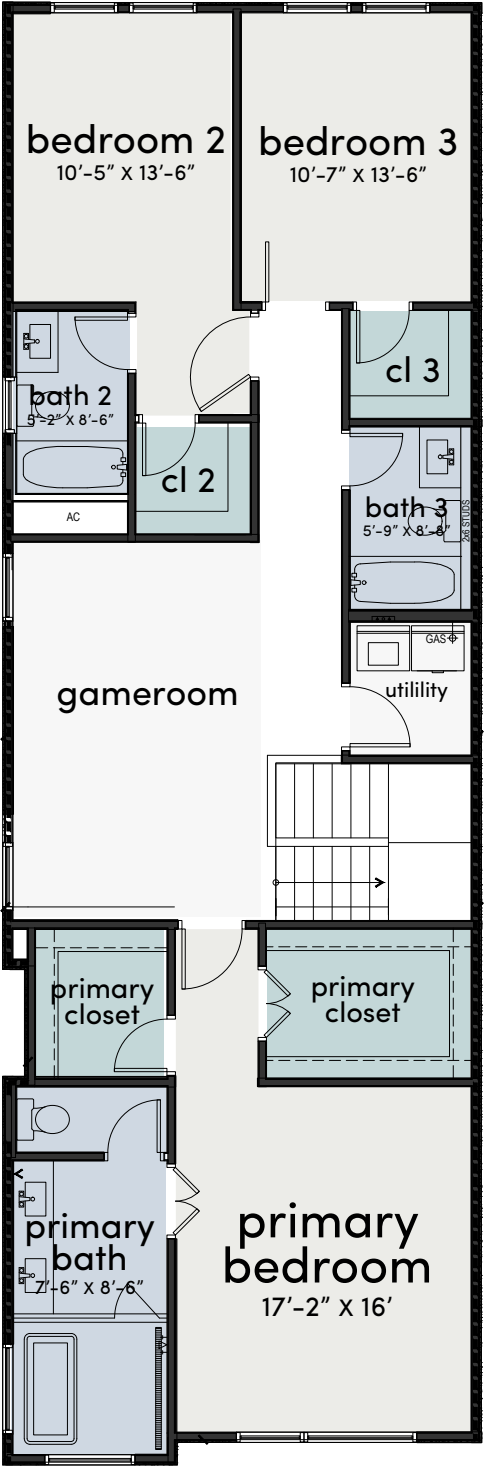
- First floor living
- Soft close drawers and cabinets
- Flex space on 2nd floor
- Private driveways
- Dual closets in primary
- Quartz countertops
- Luxury Vinyl Planks
- Vaulted ceilings
- En suite bathrooms
- Privately fenced oversized backyards
- No HOA



Floorplans

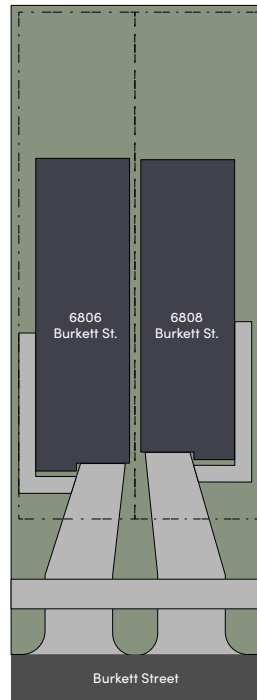


FIRST FLOOR



SECOND FLOOR

Siteplan & Availability



Address	Sqft	Beds	Baths	Pricing
6808 Burkett St	2,020	3	3.5	-
6806 Burkett St	2,020	3	3.5	-




CitiQuest
 PROPERTIES
www.citiquestproperties.com

Brian Shemirani
 281.617.6664
brian@cqhouston.com
Patrick Burbridge
 713.581.6000
sales@cqhouston.com