

JEWETT terraces

STARTING IN THE LOW \$600's
3 BEDROOMS | 3.5 BATHROOMS | 2,220 - 2,230 SQFT



MARKETED BY

CitiQuest
PROPERTIES

DEVELOPED BY

FIRST LIGHT

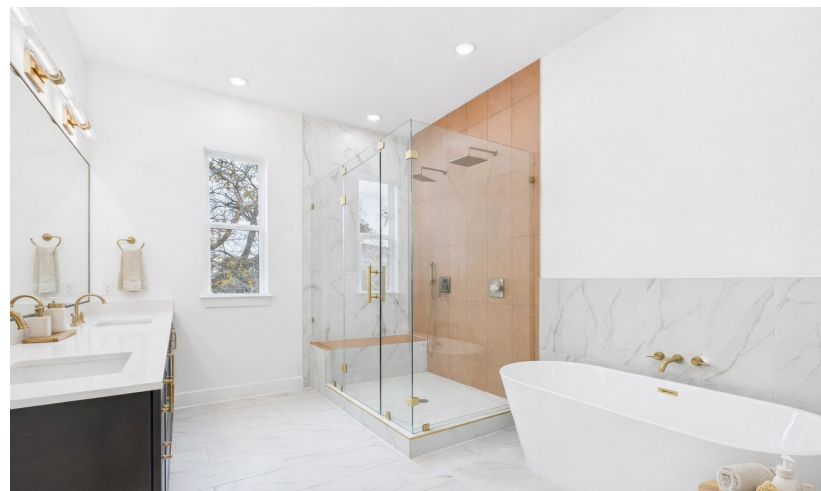
About Jewett Terraces

DESCRIPTION

Brooke Smith at it's finest. Just east of The Heights & bordering Norhill & Woodland Heights, this home offers the perfect blend of neighborhood charm & city convenience. With downtown visible from the primary bedroom, the commute is quick & effortless. The second floor primary suite is an elegant retreat featuring coffered ceilings, a walk-in closet with custom built-ins, & a spa-inspired bath with a six-foot soaking tub & double rain showerheads with handheld, designer lighting elevating every space. The chef's kitchen is thoughtfully outfitted with soft-close cabinetry, deep drawers for pots and pans, under-cabinet lighting, a generous quartz island, & smart storage including a trash drawer—ideal for both everyday living & entertaining. Abundant windows flood the home with natural light, highlighting the open-concept first-floor living area. 2 additional ensuite bedrooms on 2nd floor offer privacy & style, each w/ designer lighting & floor-to-ceiling tile baths.

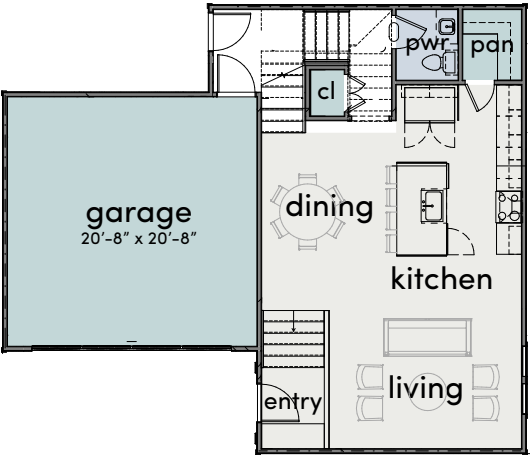
FEATURES

- Elegant second-floor primary suite with coffered ceilings
- Spacious walk-in closet with custom built-ins
- Spa-inspired primary bath featuring a six-foot soaking tub and double rain showerheads with handhelds
- Designer lighting thoughtfully selected throughout the home
- Chef's kitchen with soft-close cabinetry, deep pot-and-pan drawers, and under-cabinet lighting
- Large quartz island perfect for entertaining and everyday living
- Smart storage solutions including a built-in trash drawer
- Open-concept first-floor living area filled with abundant natural light
- Two additional second-floor ensuite bedrooms offering privacy and style
- Floor-to-ceiling tile in secondary baths with designer finishes

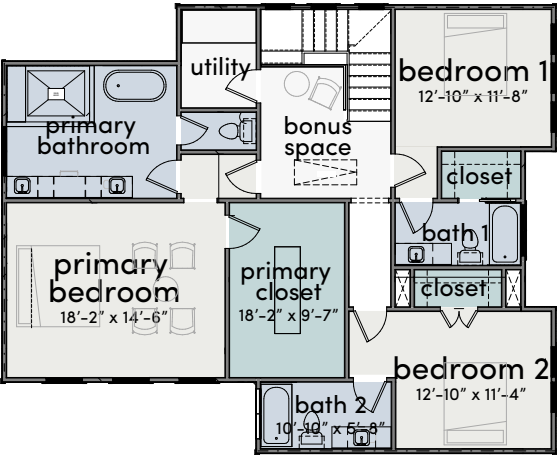


Floorplans

PLAN A

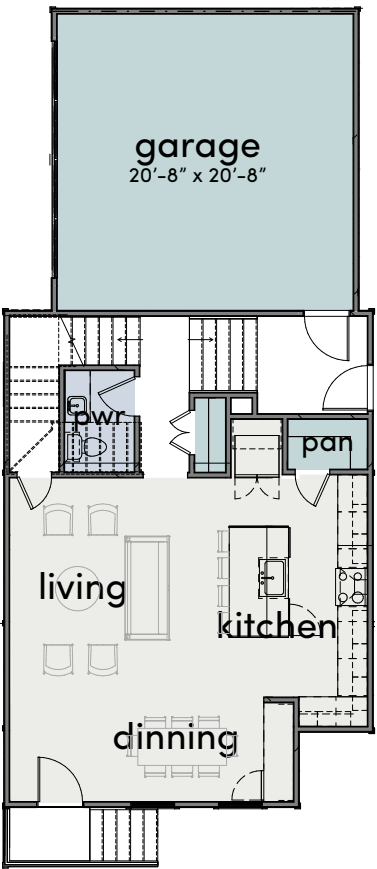


FIRST FLOOR

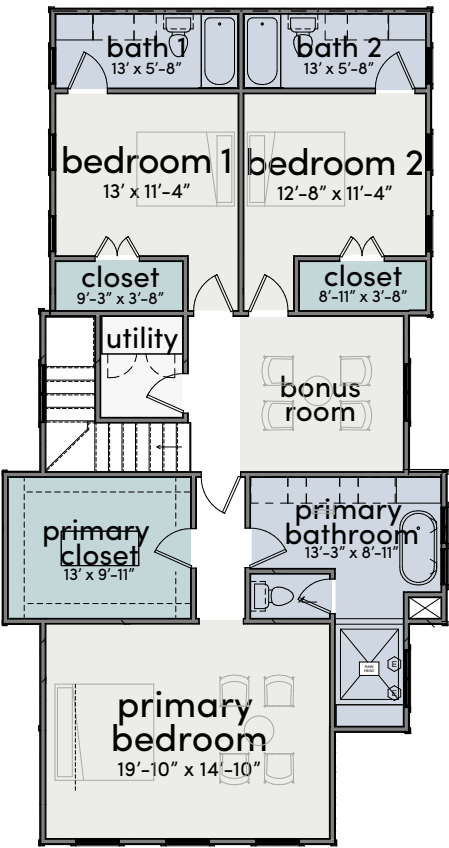


SECOND FLOOR

PLAN B

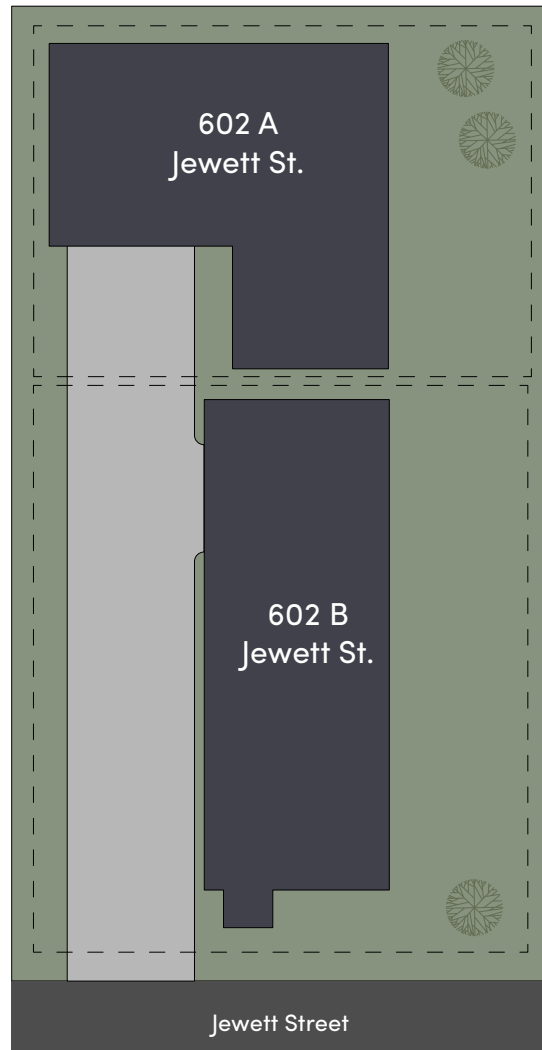


FIRST FLOOR



SECOND FLOOR

Siteplan & Availability



Address	Sqft	Beds	Baths	Pricing
602 A Jewett Street	2,220	3	3.5	\$639,900
602 B Jewett Street	2,230	3	3.5	\$639,900

MARKETED BY


CitiQuest
PROPERTIES
www.citiquestproperties.com

Margo Cunningham

713.385.6764

margo@cqhouston.com

Patrick Burbridge

713.581.6000

sales@cqhouston.com